

IN Bench Contest 240R Test Name_____ Number_____

1. Always handle oxygen cylinders with care to _____. (#6)
 - A. prevent accident
 - B. prevent damage
 - C. prevent leaks

2. The battery is to be changed in _____ air only. (#2)
 - A. fresh
 - B. ambient
 - C. zero

3. If the optional magnetic wiper is utilized soak _____ chamois surfaces of the wiper pieces with water. (#34)
 - A. one
 - B. inside
 - C. both

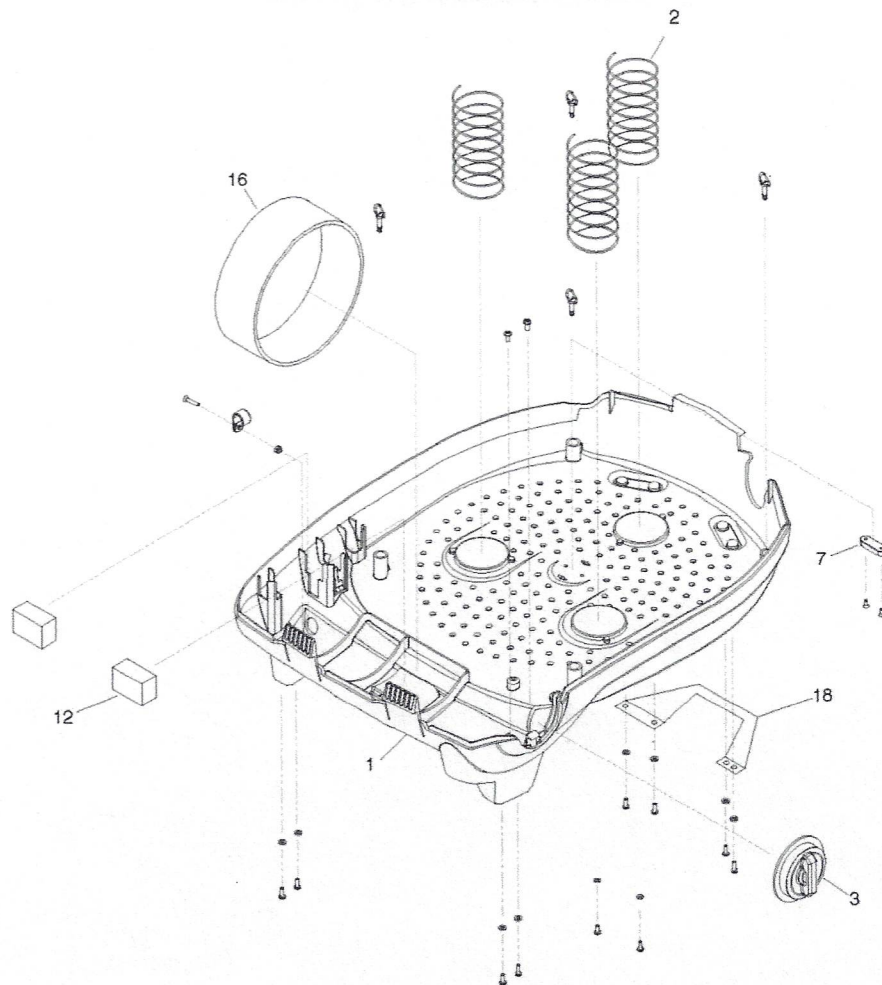
4. The BioPak breathing chamber has a _____ Volume greater than 6 liters. (#71)
 - A. Total
 - B. Pressure
 - C. Tidal

5. The use of an _____ will add to the workload and stress of the user. (#10)
 - A. 240R
 - B. BioPak
 - C. SCBA

6. During an alarm test the LED indication should turn to a flashing red with a horn sounding when the pressure gauge reads between _____ psi. (#78)
 - A. 550-1000
 - B. 650-1000
 - C. 750-1000

7. Claustrophobia or _____ when wearing a SCBA could limit or prevent the use of the BioPak 240 Revolution. (#85)
- A. Hypertension
 - B. Anxiety
 - C. Anxiousness
8. The _____ gauge is protected against sudden loss of oxygen in the event of the gauge line severing by a manual disconnect located at the gauge pass through point of the housing. (#82)
- A. pressure
 - B. exterior
 - C. oxygen
9. A foreign gas may cause cylinder _____. (#14)
- A. corrosion
 - B. deterioration
 - C. failure
10. Cylinders that have been hydro-static tested shall be cleaned for high-pressure oxygen service per _____. (#57)
- A. manufacturer Standards
 - B. Industry Standards
 - C. national standards

Lower Housing Assembly



No.	Designation	No.	Designation
1	Lower Housing Shell	12	Latch _____ Pad (19)
2	_____ Springs (16)	16	Oxygen _____ Hold-Down Strap (20)
3	External Oxygen _____ (17)	18	Carrying Handle
7	_____ Spacer (18)		

(16)
A. Air Bag
B. Housing
C. **Diaphragm**

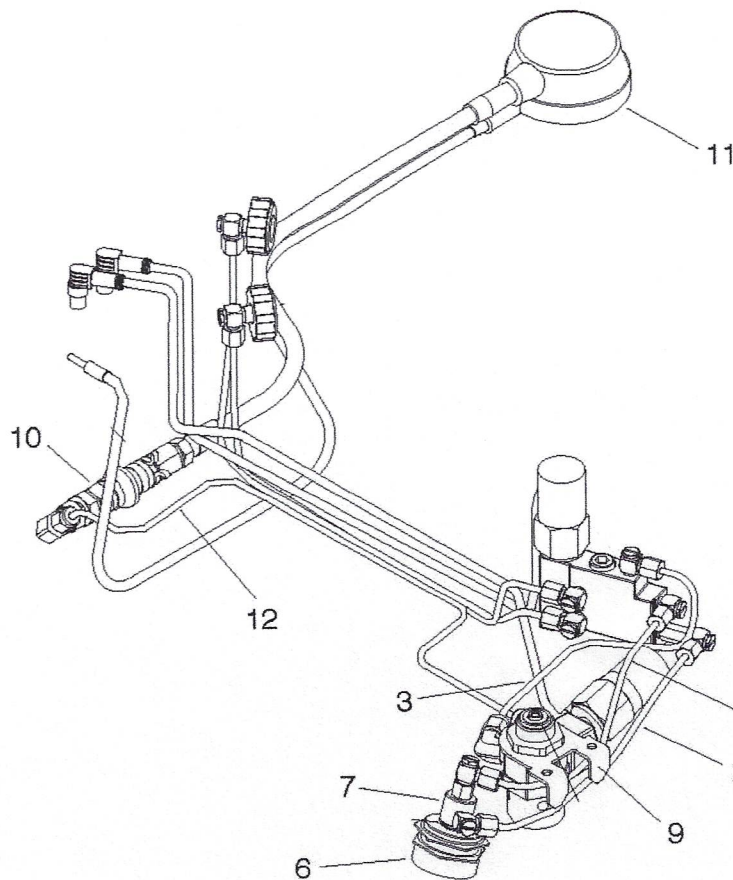
(17)
A. **Knob**
B. Cap
C. Adjustment

(18)
A. Drain
B. Shell
C. **Vent**

(19)
A. Rubber
B. **Foam**
C. Cushion

(20)
A. **Cylinder**
B. Bottle
C. Canister

Pneumatic Assembly



No.	Designation	No.	Designation
1	Bypass Feed Tube	9	Oxygen _____ Assembly (14)
2	Bypass Return Tube	10	Remote Gauge Shut Off Assembly
3	_____ Feed Tube (11)	11	Remote Gauge _____ (15)
6	_____ Push Button (12)	12	Remote Gauge Feed Tube Assembly
7	_____ Valve (13)		

(11)

- A. Bypass
- B. Return
- C. **Oxygen**

(12)

- A. Relief Valve
- B. **Bypass Valve**
- C. Minimum Valve

(13)

- A. Relief
- B. **Bypass**
- C. Minimum

(14)

- A. **Regulator**
- B. Distributor
- C. Sensor

(15)

- A. Unit
- B. Display
- C. **Assembly**